

## References:

1. Murrell GAC, Walton J. Diagnosis of rotator cuff tears. *Lancet* 2001;357:769-70.
2. Briggs L, Murrell GAC. Diagnostic ultrasound examination of the shoulder. *Tech Shoulder Elbow Surg* 2011;12:101-7.
3. Cole B, Peters K, Hackett L, Murrell GAC. Ultrasound-guided versus blind subacromial corticosteroid injection for subacromial impingement syndrome: a randomised, double blind, clinical trial. *Am J Sports Med* 2015;in press.
4. Tse AK, Lam PH, Walton JR, Hackett L, Murrell GAC. Ultrasound determination of rotator cuff tear reparability. *Shoulder & Elbow* 2015;Epub May 12, 2015.
5. Peters K, McCallum S, Briggs L, Murrell GA. A comparison of the outcomes of arthroscopic repair of partial- versus full-thickness rotator cuff tears. *J Bone Joint Surg (Am)* 2012;94:1078-85.
6. Le BT, Wu XL, Lam PH, Murrell GA. Factors predicting rotator cuff retears: an analysis of 1000 consecutive rotator cuff repairs. *Am J Sports Med* 2014;42:1134-42.
7. Lucena TR, Lam PH, Millar NL, Murrell GA. The temporal outcomes of open versus arthroscopic knotted and knotless rotator cuff repair over 5 years. *Shoulder & Elbow* 2015;E pub April 15, 2015.
8. Murrell GAC. Advances in rotator cuff repair - undersurface repair. *Tech Shoulder Elbow Surg* 2012;13:23-7.
9. Walton JR, Murrell GAC. A two-year clinical outcomes study of 400 patients, comparing open surgery and arthroscopic for rotator cuff repair. *Bone Joint Res* 2012;1:210-17.
10. Shamsudin A, Lam PH, Peters K, Rubenis I, Hackett L, Murrell GA. Revision versus primary arthroscopic rotator cuff repair: a 2-year analysis of outcomes in 360 patients. *Am J Sports Med* 2015;43:557-64.
11. Shepherd HM, Lam PH, Murrell GAC. Synthetic patch rotator cuff repair: a 10-year follow-up. *Shoulder & Elbow* 2014;6:35-9.
12. Ronquillo J, Lam P, Murrell GAC. Arthroscopic ePTFE patch repair for irreparable rotator cuff tears. Part 1: surgical technique and biomechanical comparison of two suture techniques at the patch to tendon interface. *Tech Shoulder Elbow Surg* 2013;14:29-32.
13. Ronquillo J, Briggs L, Lam P, Murrell GAC. Morphological changes of synthetic (ePTFE) interpositional patch repair for massive irreparable rotator cuff tear; a short term prospective clinical study. *Tech Shoulder Elbow Surg* 2013;14:73-80.
14. Cuff D, Clark R, Pupello D, Frankle M. Reverse shoulder arthroplasty for the treatment of rotator cuff deficiency: a concise follow-up, at a minimum of five years, of a previous report. *J Bone Joint Surg Am* 2012;94:1996-2000.



George Murrell  
Shoulders



**PROF GEORGE MURRELL**

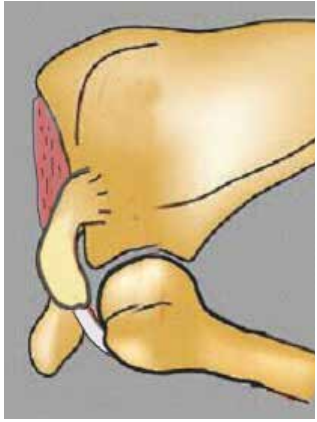
The Church  
17 Kensington Street  
Kogarah, 2217  
Sydney, Australia

**PROF GEORGE MURRELL**

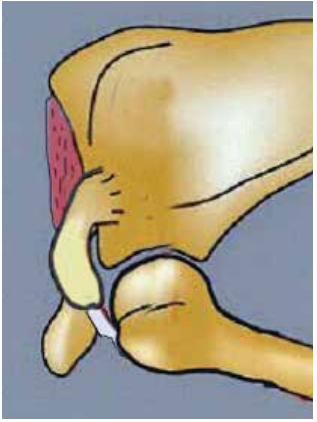
**ROTATOR  
CUFF  
CARE**



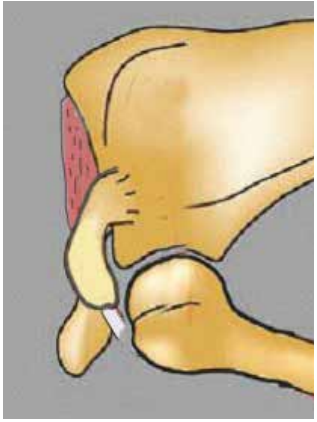
# Rotator Cuff Pathology



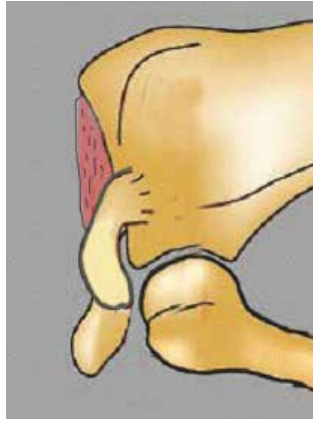
Tendinopathy/impingement and partial thickness tears < 50%



Partial thickness tears > 50%



Full thickness tears

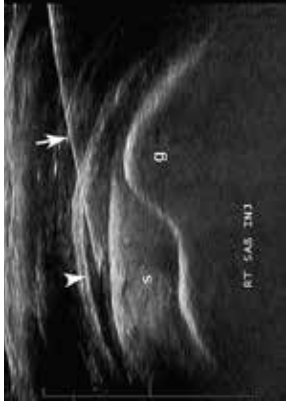


Irreparable tear



Cuff tear arthropathy

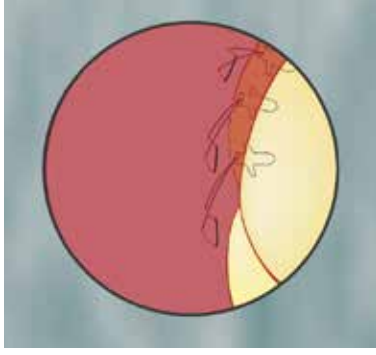
# Treatment Options



Ultrasound guided corticosteroid injection



Arthroscopic rotator cuff repair



Synthetic patch repair



Reverse total shoulder